

4" & 5" HOUSINGS

4 & 5" Filter Housings

1611009417	RA117P411	4" Clear Bowl, 3/4" BSP Ports 2PC
1611000018	RA107P411	5" Clear Bowl, 3/4" Ports 3PC
1711000006	RB7400007	Wall bracket S, blue for SX range
1810005576	RB7403013	Wrench, U for SX range



5" Filters

1758001329		5" 5 micron Spun
1706001193		5" 5 micron wound sediment filter
1758001330		5" GAC carbon filter

10" SLIM FILTERS & HOUSINGS

10" SANIC[®] Anti Microbial Filters & Housings

European made, 2 or 3 piece housing made using **Microban[®] technology**. Anti microbial effect utilising **biocidal properties of silver**. 1/4" plastic ports or 3/4" brass inserts. **Includes** wrench, bracket or screws.

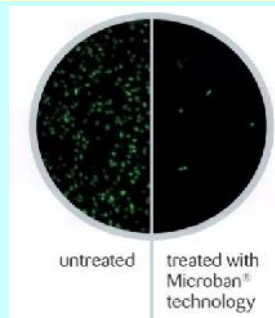
Why do I need them ?

Filters and housings are a simple effective way of trapping contaminants. However when bacteria get into the them they can breed potentially blocking the filter more quickly and at worst producing breeding grounds for bacterial colonies.

How does it work ?

Microban is incorporated into the manufacture of the filters meaning the silver based active ingredient is part of the whole filter. Once bacteria come into contact they die.

Independent tests have shown 99.99% less bacteria growth in contact tests conducted on filters compared to untreated cartridges.



1611020014	SA1380101	10" SANIC [®] bowl 1/4" DP (2P)
1611020012	SA1380401	10" SANIC [®] bowl 3/4" DP (2P)
1611020002	SA111T411	10" SANIC [®] bowl 3/4" SX (3P)
1810008752	RB7400008	Wall bracket S, white for DP range
1810000004	RB7403012	Wrench, X for DP range
1711000006	RB7400007	Wall bracket S, blue for SX range
1810005576	RB7403013	Wrench, U for SX range



Anti Microbial

SANIC® Anti Microbial Sediment Filters

Made in Europe

In Sanic® spun and wound filter elements the silver based ingredient is widely distributed so that every pore or filament is exposed meaning the chances of bacteria escaping the effect are virtually nil. The filter cartridges offer unbeatable **bacteriostatic** performance using **Microban® technology**.

10 Inch Spun SANIC® filters looks like cotton wool

1719010001	SA5706506	Spun SANIC® filter, 1 micron, 10"
1719010002	SA5706508	Spun SANIC® filter, 5 micron, 10"
1719010004	SA5706511	Spun SANIC® filter, 25 micron, 10"

10 Inch Wound SANIC® filters (SX) looks like balls of wool or yarn

1719010007	SA5115408	Wound SANIC® filter 5 micron 10"
1719010009	SA5115411	Wound SANIC® filter 25 micron 10"



Anti Microbial



10 " Filter Housings

DP 2 Piece Range

Atlas, Made in Europe

European made, 2 piece housing, bowls in PET, transparent and white, pressure relief. 1/4 to 1/2 plastic ports, 3/4 brass inserts. **Includes wrench, bracket** and screws in a sturdy box.

1611000006	ZB1380406	10" white bowl 3/4", inc wrench, bracket
1611000007	ZB1380408	10" clear bowl 3/4", inc wrench, bracket
1611000008	ZB1380106	10" white bowl 1/4" inc wrench, bracket
1611000009	ZB1380108	10" clear bowl 1/4", inc wrench, bracket
1611000010	ZB1380206	10" white bowl 3/8" inc wrench, bracket
1611000011	ZB1380208	10" clear bowl 3/8", inc wrench, bracket
1611000012	ZB1380306	10" white bowl 1/2" inc wrench, bracket
1611000013	ZB1380308	10" clear bowl 1/2", inc wrench, bracket
1810008752	RB7400008	Wall bracket S, white for DP range
1810000004	RB7403012	Wrench, X for DP range
1810000011		Spare bracket screw
1810000006		O-Ring
1600009765	FH-SCREW	FH-Screw stainless steel (4 required)
1610003883	TB-HNP038	Hex Joining Nipple Plastic 3/8" NPT
1810000011		Spare bracket screw



10" Filter Housings

Slim SX 3 Piece Range

Atlas, Made in Europe

European made, 3 piece, transparent and blue housing, ports BSP brass inserts, pressure relief. **Includes wrench, bracket** & screws in a box. 3P-AFO-SX-AB/AS

1611000014	ZB109P060	10" blue, 3/4", inc wrench, bracket.
1611010005	ZB115P064	10" clear, 3/4", inc wrench, bracket
1611010006	ZB121T064	10" clear, 1", inc wrench, bracket
1711000006	RB7400007	Wall bracket S, blue for SX range
1810005576	RB7403013	Wrench, U for SX range



10" Hot Water Filters & Housings

European made, 3 piece, hot water filter housings with pressure relief
Max working temperature **80°C**.

1611000022	RA111P518	10" Hot water housing ,3/4" ports
1719000035	RE5385108	10" Wound 5 micron (hot)
1719000036	RE5385109	10" Wound 10 micron (hot)
1719000066	RE538111	10" Wound 25 micron (hot)



10" Sediment Filters Slim 10" x 2.5"

Sediment filter cartridges are a cost effective approach to removing particulates in water (turbidity). There is often a balance to be taken on choosing a filter which removes very small particles with one which can handle faster flows.

10" Sub Micron Sediment and bacteria reduction

1719000071	RD5265102	Ceramic AB (0.45 um), fine filtration 300l/hr
1719000110	RD5165101	AC pleated glass 0.2 micron 10" sediment and bacteria, 1000 l/hr



0.45 micron



0.2 micron pleated

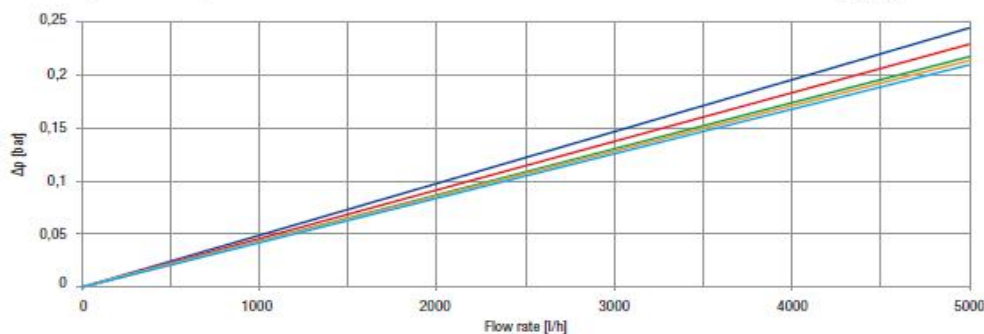
10" Spun Polypropylene Cartridges

often look like cotton wool

1758001342	110500	Budget Spun Sediment, 5um, 10"	
1758001334	110400	Budget Spun Sediment, 25um, 10"	
1719000011	RB5706506	Spun sediment, 1um, 10"	approx 800l/hr
1719000012	RB5706508	Spun sediment, 5um, 10"	approx 1500l/hr
1719000013	RB5706509	Spun sediment, 10um, 10"	approx 2000l/hr
1719000014	RB5706511	Spun sediment, 25um, 10"	approx 2500l/hr

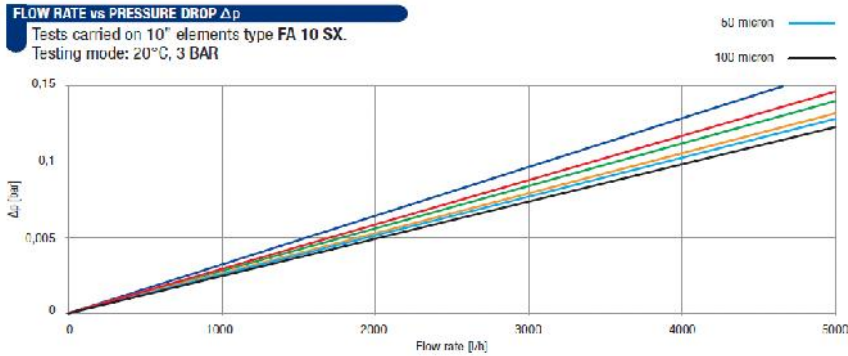
FLOW RATE vs PRESSURE DROP Δp

Tests carried on 10" elements type CPP 10 SX.
 Testing mode: 20°C, 3 BAR



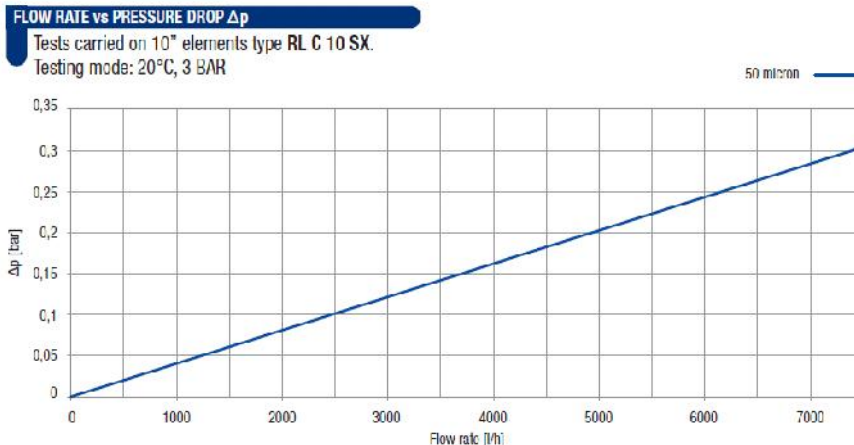
10" Spiral Wound Cartridges look like balls of wool or yarn

1758001346	110515	Budget Wound Sediment, 5 micron 10"
1758001347	110520	Budget Wound Sediment, 25 micron 10"
1719000015	RD5115406	Wound sediment filter 1 micron 10"
1719000007	RD5115408	Wound sediment filter 5 micron 10"
1719000016	RD5115409	Wound sediment filter, 10 micron, 10"
1719009426	RD5115411	Wound sediment filter 25 micron 10"
1719000050	RD5115414	Wound sediment filter, 50 micron, 10"
1719010011	RD5115419	Wound sediment filter, 100 micron, 10"



10" Pleated Cartridges (Sediment removal)

1719000018	RB5035111	Pleated filter, 25 micron, 10" , high flow rate
1719000019	RB5045114	Pleated filter, 50 micron, 10" washable
1719009523	RA5015114	Polyester netting filter 50 micron 10" washable



10" Carbon Filters

Granular activated carbon (GAC) filters are used to remove chlorine, pesticides and organics from water. The removal of these type of compounds often improves the taste and odour of the water. When GAC is pressed with a mesh the carbon filter becomes a "block" which both adsorbs the chemicals and acts as a sediment filter.

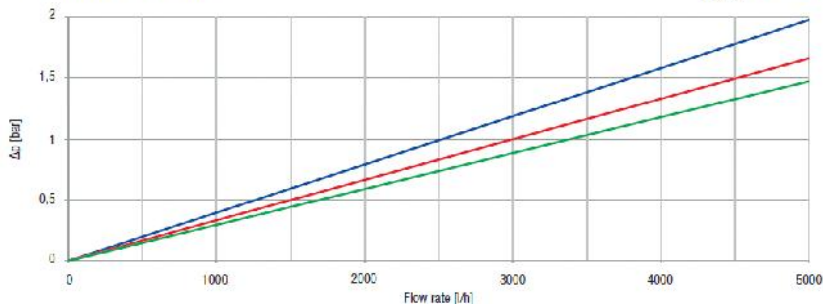
10" Granular Activated Carbon Filters (GAC)

5202000005	213608	Pallas carbon GAC 10" - medium quality
1704010002	155155-43	GAC - Pentek CC10, coconut 10" Best quality
1719009411	RB5095111	10" 25 μ m carbon filled element, sediment/GAC

10" Block Carbon Filters

FLOW RATE vs PRESSURE DROP Δp

Tests carried on 10" elements type CB-EC 10 SX.
Testing mode: 20°C, 3 BAR



5202000006	214004	Pallas carbon block 10" - medium quality
1715003913	RK5375708	Carbon block, 5 μ m, 10" (Matrix) - High quality
1719000030	RE5375615	Silver impregnated carbon block 0.3 μ m, 300 l/hr
1700007034	155268-43	CBR/2 10", lead/cyst removal (Pentek) Nominal 0.5 micron, lead reduction 99.95% reduction of Cryptosporidium, Giardia cysts High capacity chlorine taste and odour reduction

10" Antiscale & Taste Filters (Polyphosphate/GAC)

1719000043	RB5185150	10" Polyphosphate and GAC (Taste and scale)
1719000047	RB5195125	10" Polyphosphate scale removal (non proportional)

10" Anti Scale Systems Dosaprop Plus 3P HA (proportional dosing)

Anti Scale Systems with PROPORTIONAL DOSING. European made, 3 piece, transparent and blue housing, ports 3/4" BSP brass inserts and pressure relief. For the treatment of drinking water, in compliance with EU directive 98/83/CE. The Atlas Filtri proportional dosing system is equipped with a special suction device which makes use of the "venturi effect" dosing the main water flow with polyphosphate in accordance with the European regulations thus reducing scale. Maximum hardness is 500ppm.



Dosaprop Housings

1711000005	RB401P134	10" Dosaprop housing with 3/4" ports , includes bracket & spanner and polyphos fill
1810000008	RD8010003	Polyphosphate crystals (1.5Kg pack)

Dosaprop refill cartridges



10" Special media Filters

1715003975	FI-CAL010	10" Calcite/GAC, taste and pH neutralise
1717005023		DI cartridge, 10" - removes all ions
1718003473	FI-KDF010	10" KDF/GAC, superior taste & odour
1719000021	RB5355125	10" Nitrate reduction filter 14,000 mg NO3 at 80 l/hr
1715003973	IFSMMA010	10" Fluoride Reduction; 4,500 mg F at 240l/hr
1758001371	110925	Kit Cartridge Blister (PP5µ+GAC+Carbon Block)
1719000022	RB5175125	Empty cartridge, 10"x2.5



20" SLIM FILTERS & HOUSINGS

20" Filter Housings Slim SX 3 Piece Range Atlas, Made in Europe

European made, 3 piece, transparent and blue housing, ports BSP brass inserts, pressure relief. **Includes wrench, bracket & screws.**

1611000039	ZB187P640	20" blue, 3/4", inc wrench, bracket
1611000040	RB186P064	20" clear, 3/4", inc wrench, bracket
1611000041	ZB189T064	20" clear, 1", inc wrench, bracket
1711000006	RB7400007	Wall bracket S, blue for SX range
1810005576	RB7403013	Wrench, U for SX range

NSF/ANSI 42 & 62



20" Hot Water Filters & Housings

European made, 3 piece, hot water filter housings with pressure relief **Max** working temperature **80°C**.

1611000023	RA	20" Hot water housing, 3/4" ports
1719000038	RE5706706	20" CPP Spun 1 micron
1719000039	RE5706709	20" CPP Spun 10 micron
1719000040	RE5387108	20" Wound 5 micron (hot)
1719000041	RE5377109	20" Wound 10 micron (hot)
1719000042	RB5177138	20" Empty container



20" Sediment Filter Cartridges - slimline 20" x 2.5"

20 Inch Spun Polypropylene Cartridges

1758001361	110601	Spun sediment filter, 1 micron, 20"	approx 1400l/hr
1758001360	110600	Spun sediment filter, 5 micron, 20"	approx 2700l/hr
1758001362	110605	Spun sediment filter, 25 micron, 20"	approx 4500l/hr

20 Inch Pleated Cartridges

1719000025	RB5037111	Pleated sediment filter, 25 um, 20" high flow rate
1719000026	RB5047114	Pleated sediment filter, 50 um, 20" washable

20 Inch Empty Cartridges

1719000027	RB5177125	Empty Cartridge, 20"x2.5
------------	-----------	--------------------------

20" Carbon Filters

1758001366	110620	Budget Granular carbon, 20"
1758001368	110630	Budget Carbon block, 20"
1715003988	Matrix	Carbon Block, 20", 5um
1700002136	NCP-20	Carbon impregnated pleated (high flow 19 l/min)

10 & 20" BIG FILTERS & HOUSINGS

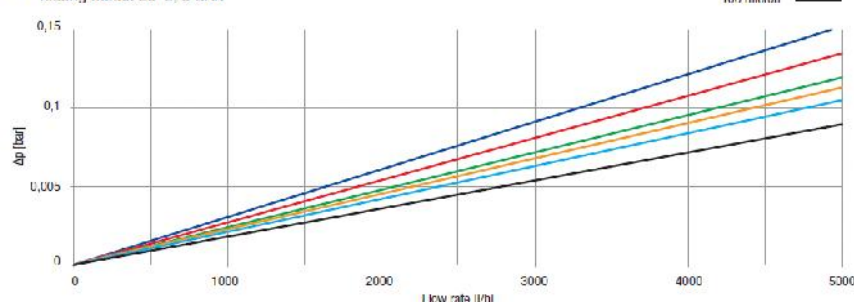
10" and 20" Big (4.25" diam) Filter Housings Pentek Big Blues

1604001165	A1050120	A105 BIG 10" clear bowl 1" *
1611030020		Big DP Housing wrench & bracket
1604001167	A1050140	A105 BIG 20" clear bowl 1" *
		* need to buy bracket, & wrench separately
1611030021		Big DP Housing wrench & bracket
5214002191		Bracket for BIG housing (metal)
1806007350		A105 Wrench for BIG clear bowl

10" For "BIG" Filters BB (10 x 4.25 diams)

1758001352		Carbon block, 5um 10" BB Budget range
1758001344		Spun PP sediment filter, 5 um. 10" BB
1758001345		Spun PP sediment filter, 25 um. 10" BB
1719000046	RD5115508	Wound sediment filter 5 um. 10" (typ 2m3/hr)
1719000005	RD5115511	Wound sediment filter 25 um. 10"
1704000026	255491-43	Pleated reusable filter, 20 um. 10", Pentek ECP20

Tests carried on 10" elements type FA 10 BIG SX.
Testing mode: 20°C, 3 BAR



20" For BIG BB Filters (4.25" diams)

1758001369	110635	Carbon block, . 20" BB budget range
1704010003	150583-43	Carbon block, 20" BB, Pentek EP20 high quality
1719000059	RE5397606	Carbon block 1um, 20" BB, CBEC lead
1700003082	155249-43	Carbon GAC BB Petek High quality
1758001364	110611	Spun sediment filter, 5 um. 20", BB typ 4.5m3/hr
1758001363	110610	Spun sediment filter, 25 um. 20", BB
1719000092	RD5117506	Wound sediment filter, 1 um 20 x 4.25" BB
1719000009	RD5117508	Wound sediment filter, 5 um 20 x 4.25" BB
1719002838	RD5117511	Wound sediment filter 25 um 20 x 4.25" BB
1719000048	RD5117514	Wound sediment filter, 50 um 20 x 4.25" BB
1719000049	RE5117519	Wound sediment filter, 100 um 20 x 4.25" BB
1704000035	ECP5-20BB	Pleated reusable filter, 5 um. 20" BB, Pentek
1700000007	ECP20-20	Pleated reusable filter, 20 um. 20" BB, Pentek
1704000078		Empty cartridge
1709055516	Cartridge	M.A.Z. Cartridge for iron reduction (treats 300,000 litres at 1ppm iron). (pH>7, low manganese)



Big Bag Filters & Housings Pentek

Pentek filter housings keep systems on stream longer by reducing bag filter change time. Applications include commercial water, food service, Industrial, & residential.

1608000008	150357	Big Blue Bag Vessel 10" Blue 1.5" BSP
1608000009	150356	Big Blue Bag Vessel 20" Blue 1.5" BSP
1704000044	155385-03	Filter Bag 10" 5µm
1704009040	155389-03	Filter Bag 10" 25µm (25 lpm)
1704000095	155384-03	Filter bag 20" 1µm
1704000045	155386-03	Filter Bag 20" 5µm (60lpm)
1700001244	155390-03	Filter Bag 20" - 25µm (60lpm)
5214002191		Bracket for BIG housing
1806007350		Wrench for Big



In-line Filters

1611000033 RA402P442 Dosal - scale protection for WASHING MACHINES
polyphosphate crystals in a plastic housing 3/4"
size: 130mm x 68mm (h x diam)



5" In Line Filters

1758001307 110095 In line GAC coconut shell, 2" x 5", 1/4" NPT

10" In line Filters

1600001387 Drinking Water Cartridge (silver impreg carbon)
1758001312 110115 In line GAC filter, 2" x 10", 1/4" push fit
1758001310 110110 In line GAC filter 2"x10" 1/4" NPT
5202000015 In line Gac Pallas 2" x 10", 1/4" NPT thread
1718003010 In line Gac 2" x 10", 1/4" push fit
1715003935 In line Filter, 2" x 10", 3/8" JG
1715003931 In line GAC filter, 2" x 10", 1/4" JG 90 degree
1717000912 In Line pH correction 1/4" NPT
1715003923 In line KDF55 cartridge, 0.50lb, 2" x 10", 1/4" NPT
1715003924 In line phosphate/GAC , 2" x 10", 1/4" NPT
1758001319 In line empty cartridge, 2" x 10", 1/4" NPT



Pallas CT Mono Quick Change Filters (1/4" push fit connectors)

**DEAD END FILTRATION
BAYONET STYLE DEVICE.**

Versatile and easy solution to use separately or to combine with other water treatment devices.

**Pallas
CT MONO**

NO ELECTRICITY REQUIRED
CT MONO / 5000 / 1000

EASY INSTALLATION
CT MONO / 5000 / 1000

Filter head has 1/4" push fit connectors. Each CT comes with filter head, bracket and filter

5202000092 795500 CT MONO 82 sediments 5µ (bayonet filter)
5202000093 795501 CT MONO 83 carbon (bayonet filter)
5202000116 795511 CT MONO 91 ultrafiltration
5202000117 545900 Cartridge CT82
5202000118 546700 Cartridge CT83
5202008133 547512 CT91 ultrafiltration membrane

Pallas CT Duo & Trio Quick Change Filters (1/4" push fit connectors)

CT Duo and Trio comes complete with filter head bracket, filters, Tap and fitting kit.

5102010007 795416 CT DUO c/w CT 82 5µm Sediment & CT 83 GAC
5102020001 795411 CT TRIO c/w CT 82 5µm Sediment, CT83 GAC, CT91 UF